



JB DUKE
HOTEL

In the early 1900's, the establishment of a reliable hydroelectric power grid led to rapid industrial growth throughout North Carolina. James Buchanan “Buck” Duke helped make that a reality. His forward-thinking spirit lives on with the opening of the JB DUKE HOTEL, an upscale, full-service hotel and meeting destination that invites travelers, thinkers and visionaries to come and be energized.





JB DUKE
HOTEL



MEETINGS *and* EVENTS

CHIC. CONTEMPORARY. *Convenient.*

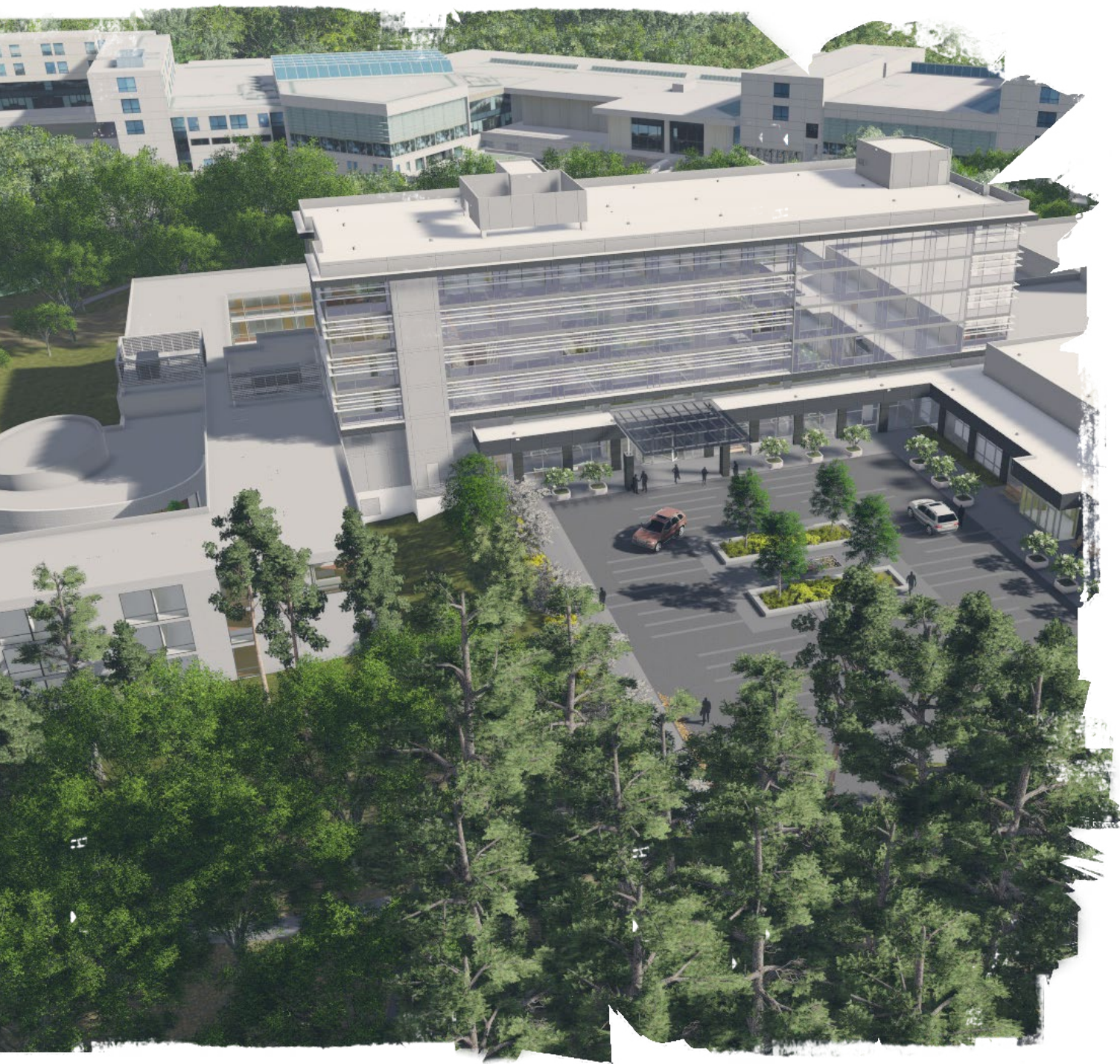
Comfort finds purpose with the launch of Duke's newest full-service hotel, the JB Duke Hotel.

The JB Duke Hotel adds stunning new capabilities to the energetic heart of Duke's West Campus. A fresh, contemporary design comprises the hotel's THOMAS EXECUTIVE CONFERENCE CENTER, 198 elegant guest rooms and suites, a full-service restaurant, two bars and a fitness center, all integrated with tastefully appointed banquet and conference facilities.

Linked by a skybridge to the Fuqua School of Business and only steps away from Cameron Indoor Stadium, the Duke University Golf Club and other Duke athletic venues, the JB Duke's central location, impeccable service and 20,000+ sq. ft. state-of-the-art meeting, classroom and event spaces make it the ideal destination for conferences, weddings and social gatherings.







FEATURED *spaces*

Multiple spaces plus singular service equals endless opportunity.

■ BELL SOUTH MEETING ROOM

Windows overlooking the lower courtyard allow natural light to spill into this intimate space with its dramatic curved back wall. Fully integrated with audio/visual equipment, the room is accessed through a smaller semi-private pre-function area.

■ GLAXO AND EXECUTIVE CLASSROOMS

These executive spaces feature ergonomic seating for 65 in a tiered arrangement that provides optimum acoustics for speaker events. Each room offers full audio/visual capabilities and adjoins a semi-private pre-function area.

■ THE ATRIUM

Skylights grace this open, airy space, which adjoins the Ballroom and can serve as a break or exhibit area.

■ TEAM ROOM 59

This convivial space adjoins the Dining Room atrium and bar, providing a casual feel that encourages conversation. Also useful as an overflow area, and can be partitioned for private dining.

■ BALLROOM & GALLERY

At 5,450 sq. ft., the Ballroom is suitable for large conferences or banquets. Air walls allow subdividing for smaller space needs. Ballroom doors open to glass-walled pre-function areas with plentiful natural light. The Gallery can be used for meal service or exhibits.

■ UNIVERSITY & FUQUA BOARDROOMS

These tastefully appointed boardrooms overlook a wooded area. Both rooms have flat panel TVs and built-in computers, data ports and power stations.

■ TEAM ROOMS

These 20 rooms are dedicated meeting spaces, each with a conference set of six ergonomic chairs, 55" LED smart TV, tackable wall, white board and built-in computer, USB and power stations.

■ MEETING ROOMS

Glass entry walls make these flexible spaces seem even larger, and include opaque shades for privacy as desired. Each features a built-in computer, overhead projector with screen and speakers.

ROOM *capacities*

A comprehensive overview of the JB Duke Hotel's individual meeting spaces and their capacities.

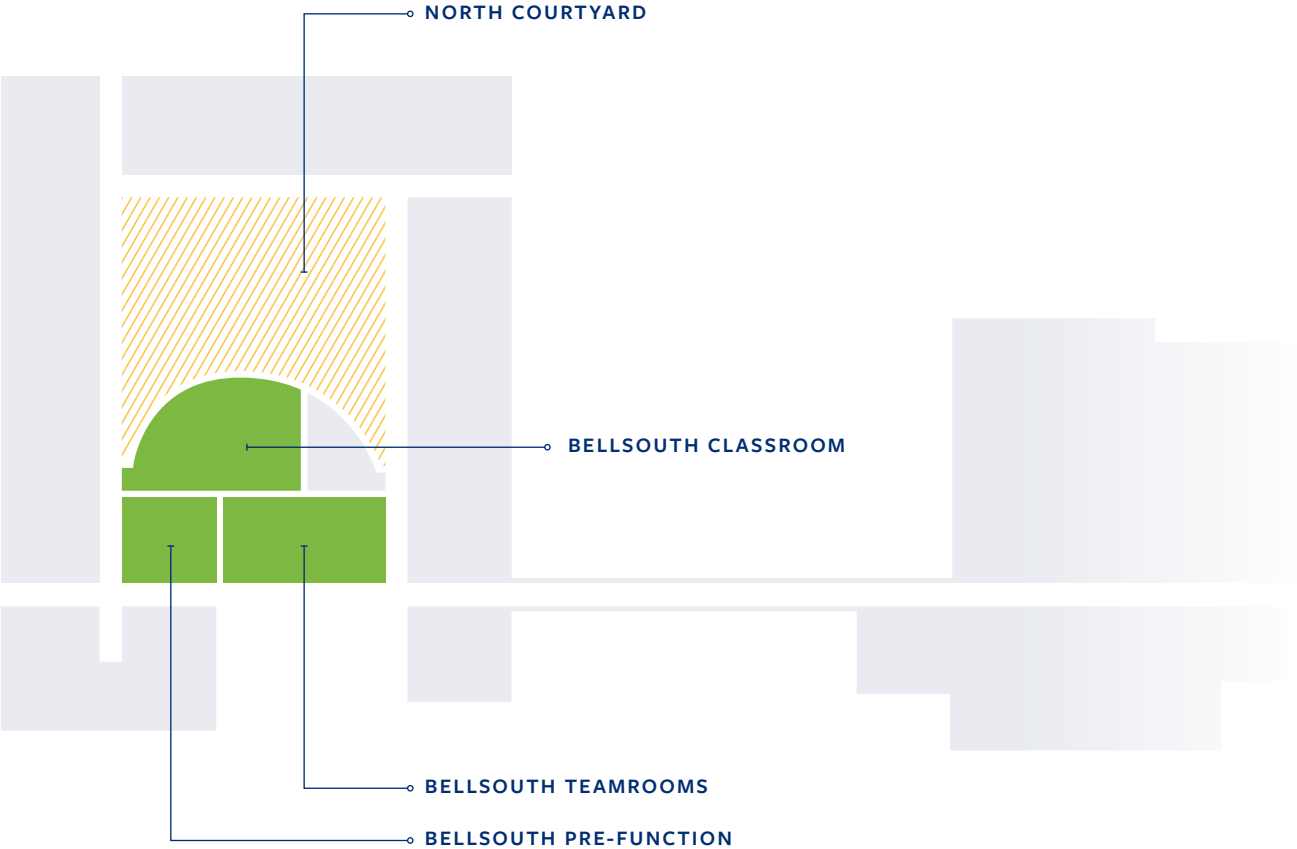
| EVENT SPACE | SQ. FT. | DIMENSIONS (l*w*h) | CLASSROOM | THEATER | CRESCENT ROUNDS | CONFERENCE | USHAPE | RECEPTION | BANQUETS |
|--------------------------------------|---------|--------------------|-----------|---------|--------------------|------------|--------|-----------|----------|
| Ballroom | 5450 | 55x99 | 210 | 540 | 264 | N/A | N/A | 475 | 320 |
| Ballroom A | 900 | 33x27 | 48 | 60 | 40 | 16 | 27 | 70 | 50 |
| Ballroom B | 900 | 33x27 | 48 | 60 | 40 | 16 | 27 | 70 | 50 |
| Ballroom AB | 1800 | 33x55 | 90 | 196 | 88 | 40 | 39 | 150 | 120 |
| Ballroom C | 1850 | 33x55 | 90 | 196 | 88 | 40 | 39 | 150 | 120 |
| Ballroom ABC | 3650 | 66x55 | 126 | 300 | 184 | N/A | N/A | 300 | 220 |
| Ballroom D | 900 | 33x27 | 48 | 60 | 40 | 16 | 27 | 70 | 50 |
| Ballroom E | 900 | 33x27 | 48 | 60 | 40 | 16 | 27 | 70 | 50 |
| Ballroom DE | 1800 | 33x55 | 90 | 196 | 88 | 40 | 39 | 150 | 120 |
| Ballroom CDE | 3650 | 66x55 | 126 | 300 | 184 | N/A | N/A | 300 | 220 |
| The Atrium | 2050 | 36x57 | N/A | N/A | N/A | N/A | N/A | 100 | N/A |
| Ballroom Gallery | 2000 | 18x111 | N/A | N/A | N/A | N/A | N/A | 200 | N/A |
| Bellsouth Meeting Room | 1110 | 39 x 28 | 30 | 50 | 30 | 24 | 18 | 70 | 48 |
| Glaxo Classroom | 1460 | Ampitheater | 65 | N/A | N/A | N/A | N/A | N/A | N/A |
| Executive Classroom | 1460 | Ampitheater | 65 | N/A | N/A | N/A | N/A | N/A | N/A |
| Meeting Room A | 1000 | 25x40 | 36 | 90 | 36 | 24 | 24 | 70 | 64 |
| Meeting Room B | 1000 | 25x40 | 36 | 90 | 36 | 24 | 24 | 70 | 64 |
| Meeting Room C | 1000 | 25x40 | 36 | 90 | 36 | 24 | 24 | 70 | 64 |
| Meeting Room D | 580 | 18x32 | 25 | 64 | 21 | 16 | 15 | 40 | 30 |
| University Boardroom | 700 | 22x32 | N/A | N/A | N/A | 16 | N/A | N/A | N/A |
| Univeristy Veranda | 330 | 22x15 | N/A | N/A | N/A | N/A | N/A | 20 | 16 |
| Fuqua Boardroom | 460 | 23x20 | N/A | N/A | N/A | 14 | N/A | N/A | N/A |
| Executive Team Rooms (8 each) | 260 | 13x20 | N/A | N/A | 6 | N/A | N/A | N/A | N/A |
| Glaxo Team Rooms (7 each) | 260 | 13x20 | N/A | N/A | 6 | N/A | N/A | N/A | N/A |
| Bellsouth Team Rooms (5 each) | 225 | 11x20 | N/A | N/A | 6 | N/A | N/A | N/A | N/A |
| South Study Lounge | 650 | 23x28 | 12 | 20 | N/A | 10 | 14 | N/A | N/A |
| North Study Lounge | 650 | 23x28 | 12 | 20 | N/A | 10 | 14 | N/A | N/A |
| South Courtyard | 2880 | 40x72 | N/A | N/A | N/A | N/A | N/A | 100 | N/A |
| Dining Room Terrace | 2630 | 28 x 94 | N/A | N/A | N/A | N/A | N/A | 100 | 72 |

LEVEL 1

Meeting places

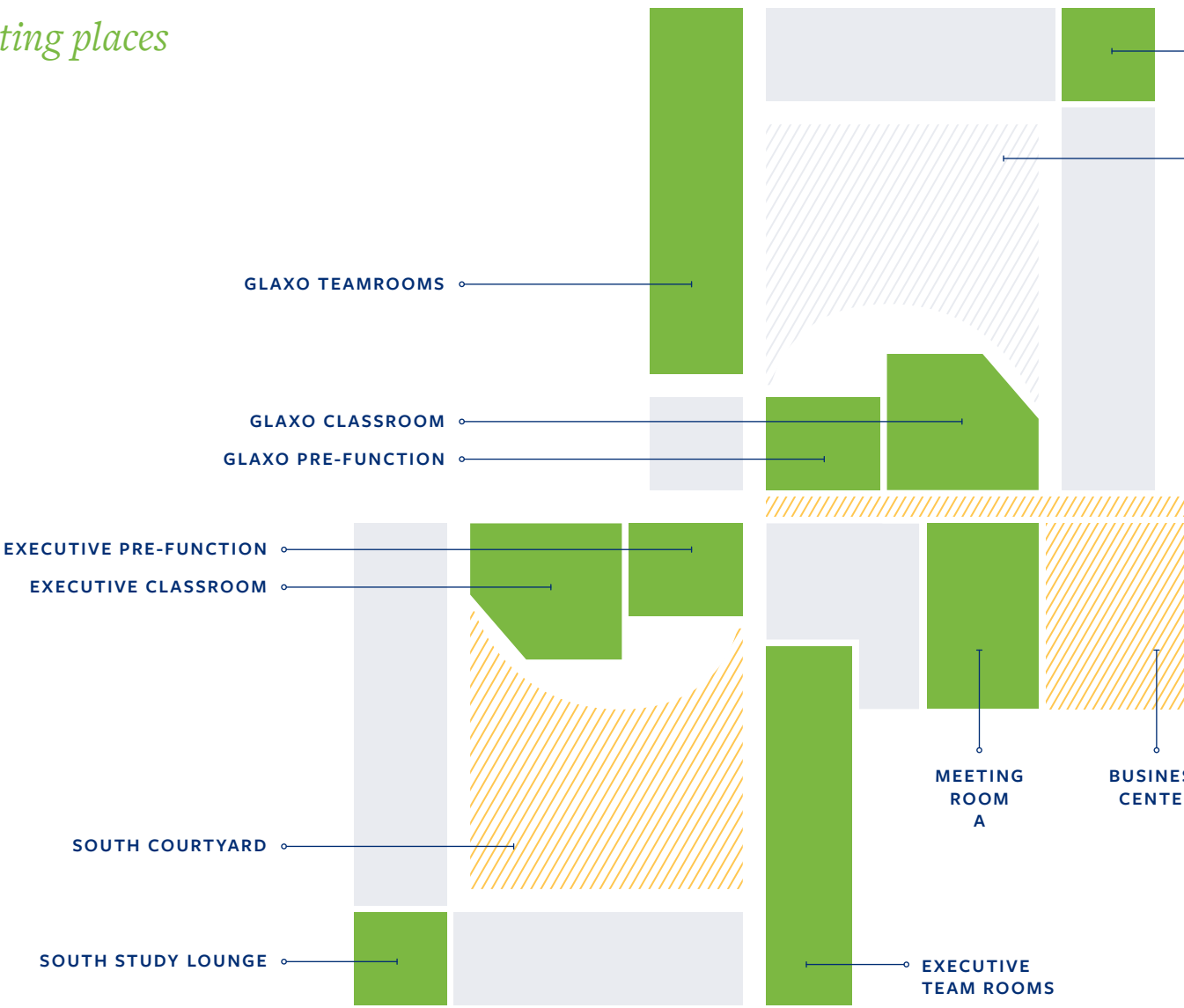
AVAILABLE SPACE

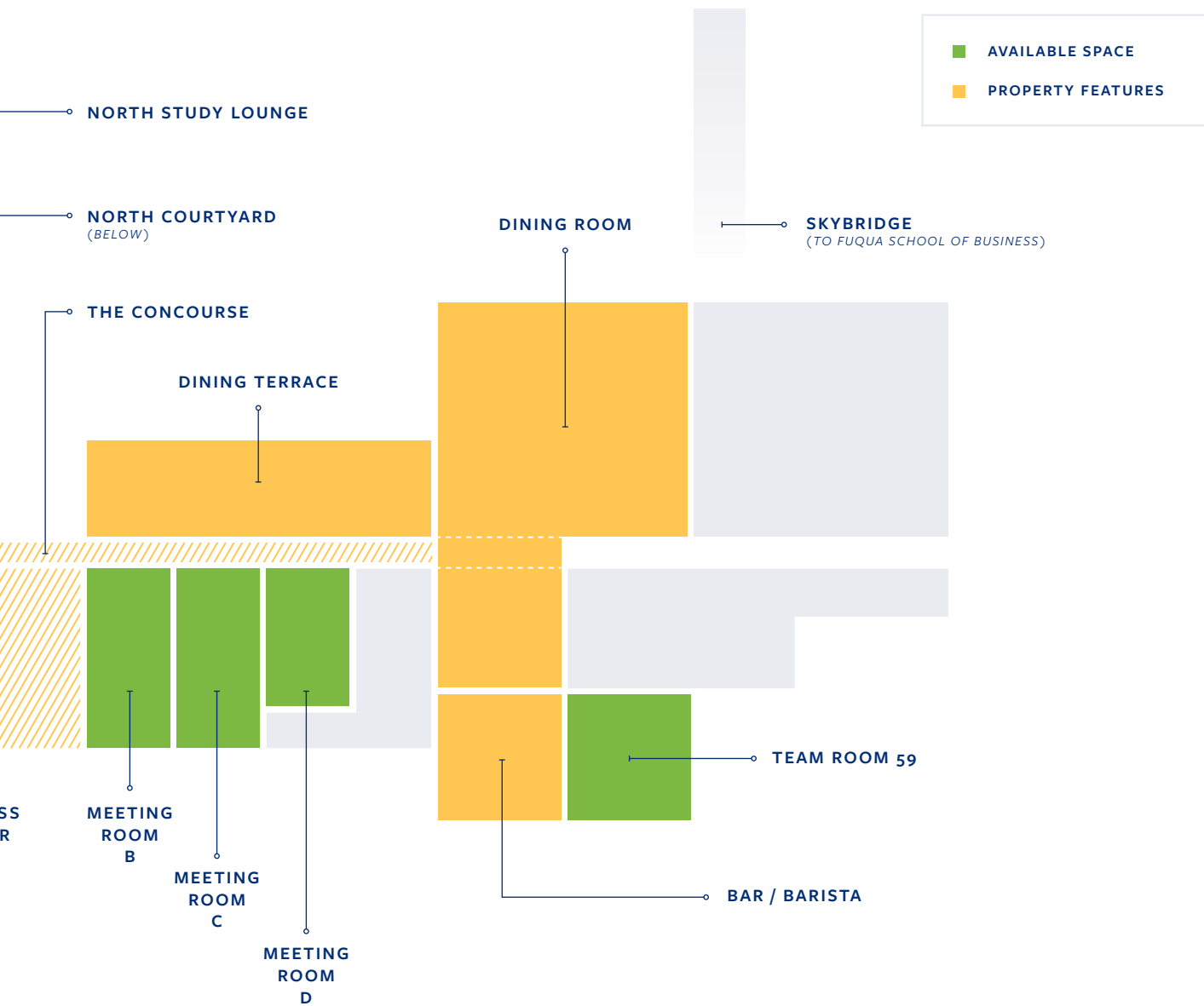
PROPERTY FEATURES



LEVEL 2

Meeting places





LEVEL 3

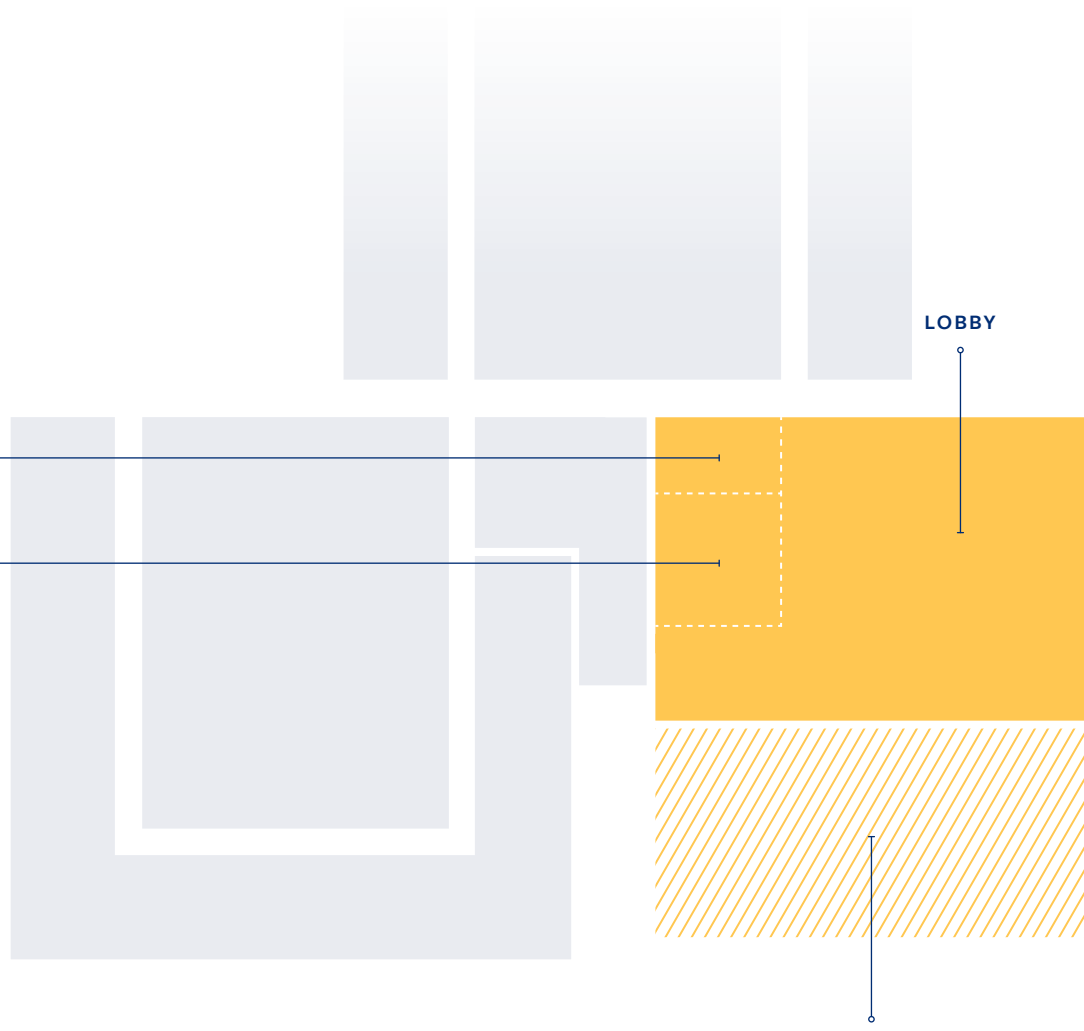
Meeting places

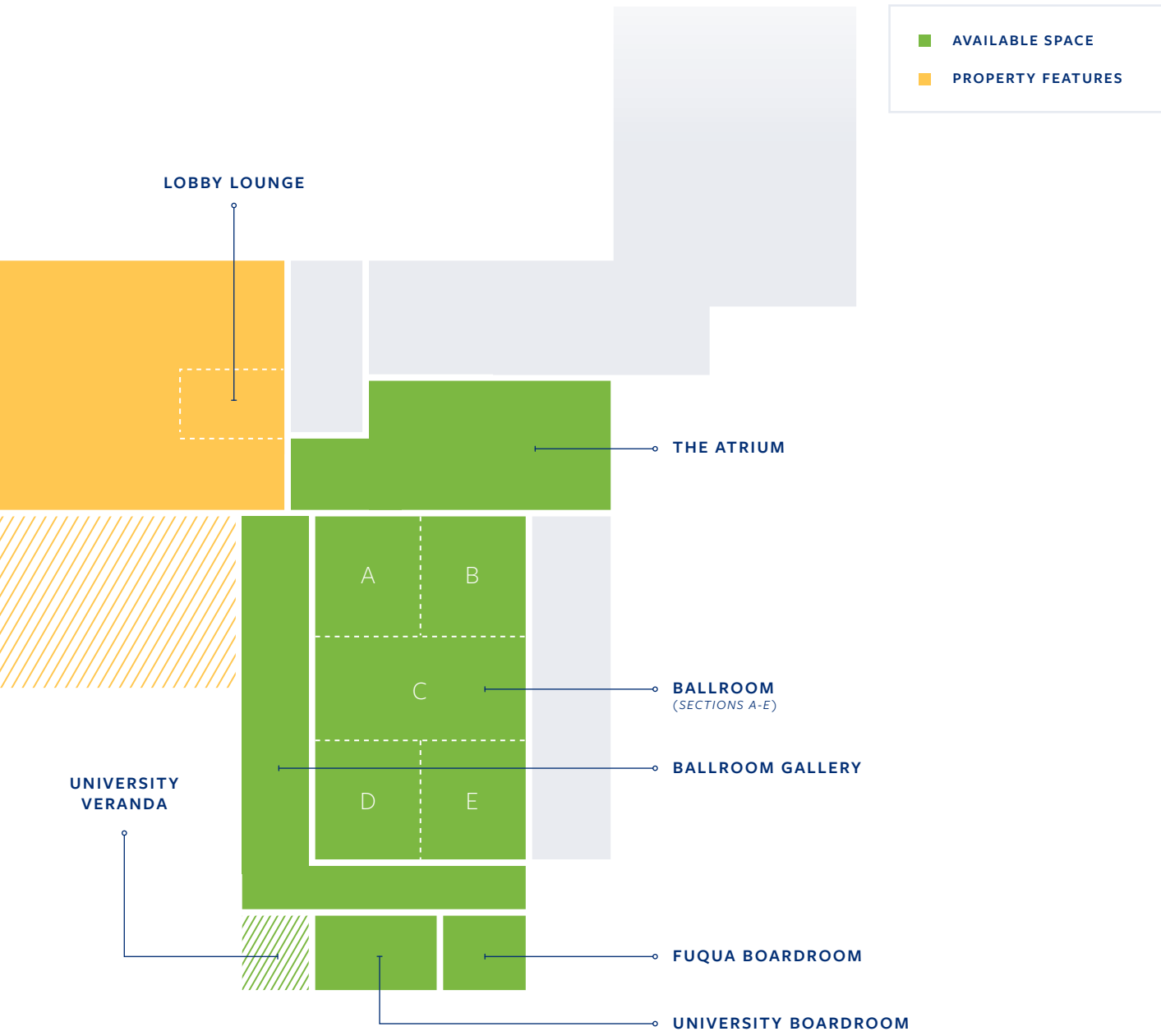
GIFT SHOP

GUEST REGISTRATION

LOBBY

ENTRY PLAZA





LET US MAKE YOUR EVENT *special.*

*At the JB Duke Hotel, our total focus is on making
your event an unqualified success.*

Contact our experienced planning staff with your requirements. We will help plan and schedule every aspect of your gathering to ensure we exceed your goals for the event. Please allow us to introduce you to our special brand of Southern hospitality and service.



230 SCIENCE DRIVE
DURHAM, NC 27708
(919) 660-6400
JBDUKEHOTEL.COM







J.B. DUKE

INDUSTRIALIST AND PHILANTHROPIST

1856 - 1925

J. B. Duke's establishment of The Duke Endowment enabled the chartering of Duke University.



JB DUKE
HOTEL